

Stud End Fixing



Applications

The stud end fixing provides a quick method for installing services into:

- Concrete structures
- Metal decking structures
- Metal brackets using nuts

Product Advantages

- Quick installation into concrete using drop-in anchors or nuts
- Drop-in-anchors or nuts supplied free as part of the kit
- Available in sizes M6, M8 and M10

Stud End Fixing Sizes

Size	Weight range	Thread
No.	10 – 10kg	M6
No. 2*	10 – 45kg	M6 & M8
No. 3*	45 – 90kg	M6 & M8
No. 4	90 – 225kg	M10

- The above sizes have a 5:1 safety factor.
- Available in lengths 1m to 10m as standard – other lengths on request.

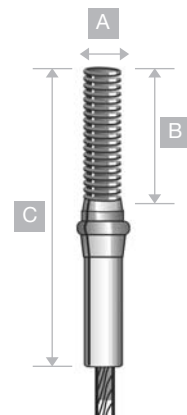
*Stainless steel stud hangers are available in sizes No.2 and No.3 with M6 and M8 threads.

example	prefix - size - length
Item order No.	HF-SG - No.2 - 1m

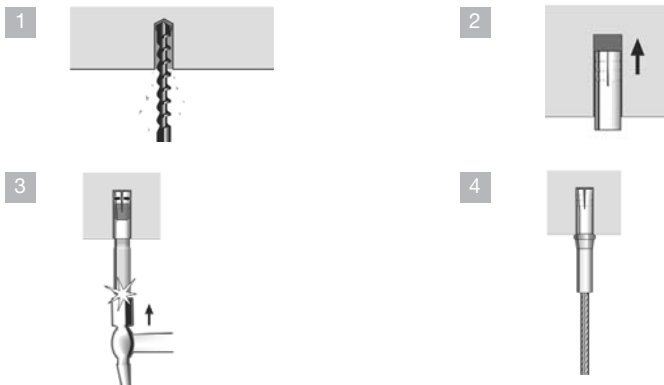
Stud Specification

All standard Gripple studs are manufactured from mild steel which is zinc coated for maximum anti-corrosion properties.

A mm	B mm	C mm
6	20	48
8	45	70
10	50	100



How to Use



Wire Anchor
(see page 19)

Alternative fixing arrangement using wire anchor.

